

Efficacy and safety of lirafugratinib in patients with FGFRi-naïve cholangiocarcinoma harboring FGFR2 fusions/rearrangements

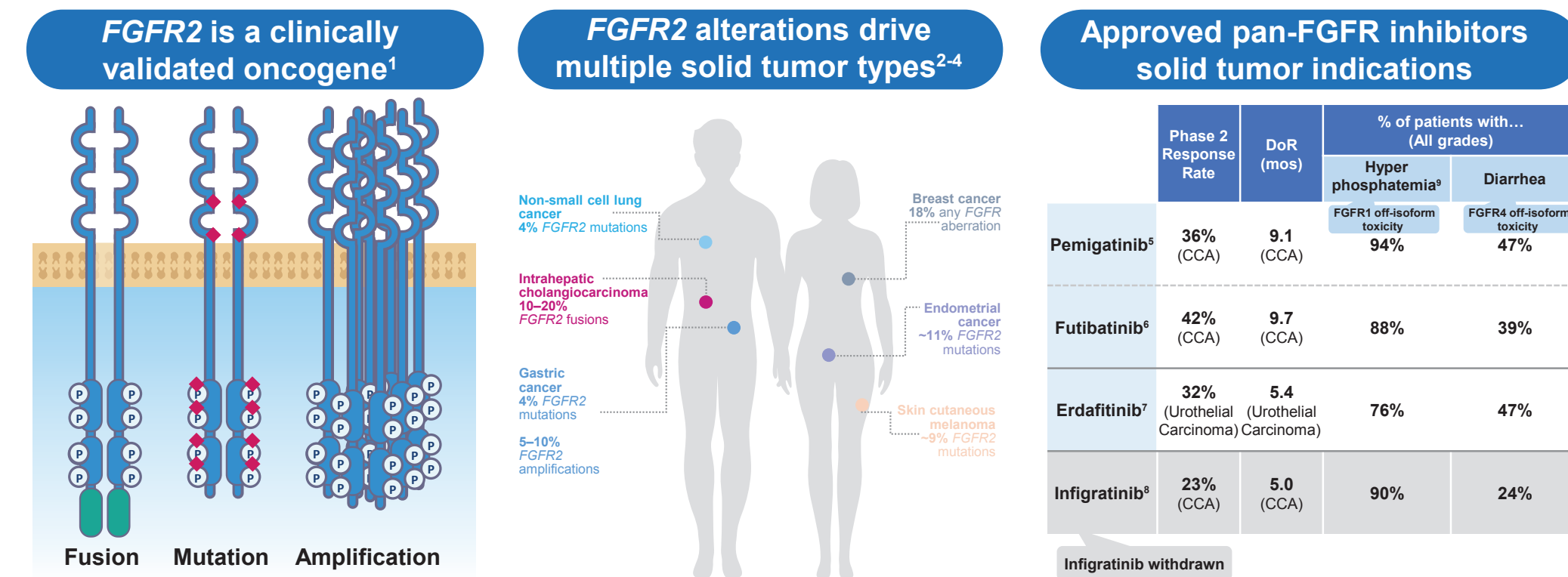
Presented at
Cholangiocarcinoma Foundation
Annual Conference
May 1-3, 2026

Antoine Hollebecque¹, Mitesh Borad², Peter Lu³, Xianzhang Meng³, Kristin Ryan³, Laura Alexander³, Jia Liu⁴, Do-Youn Oh⁵, and Richard Kim⁶

¹Gustave Roussy Cancer Center, Villejuif, France; ²Mayo Clinic, Scottsdale, AZ, USA; ³Elever Therapeutics, Fort Lee, NJ, USA; ⁴The Kinghorn Cancer Centre, St. Vincent's Hospital, Sydney, Australia; ⁵Seoul National University Hospital and College of Medicine, Seoul, South Korea; ⁶Moffitt Cancer Center, Tampa, FL, USA

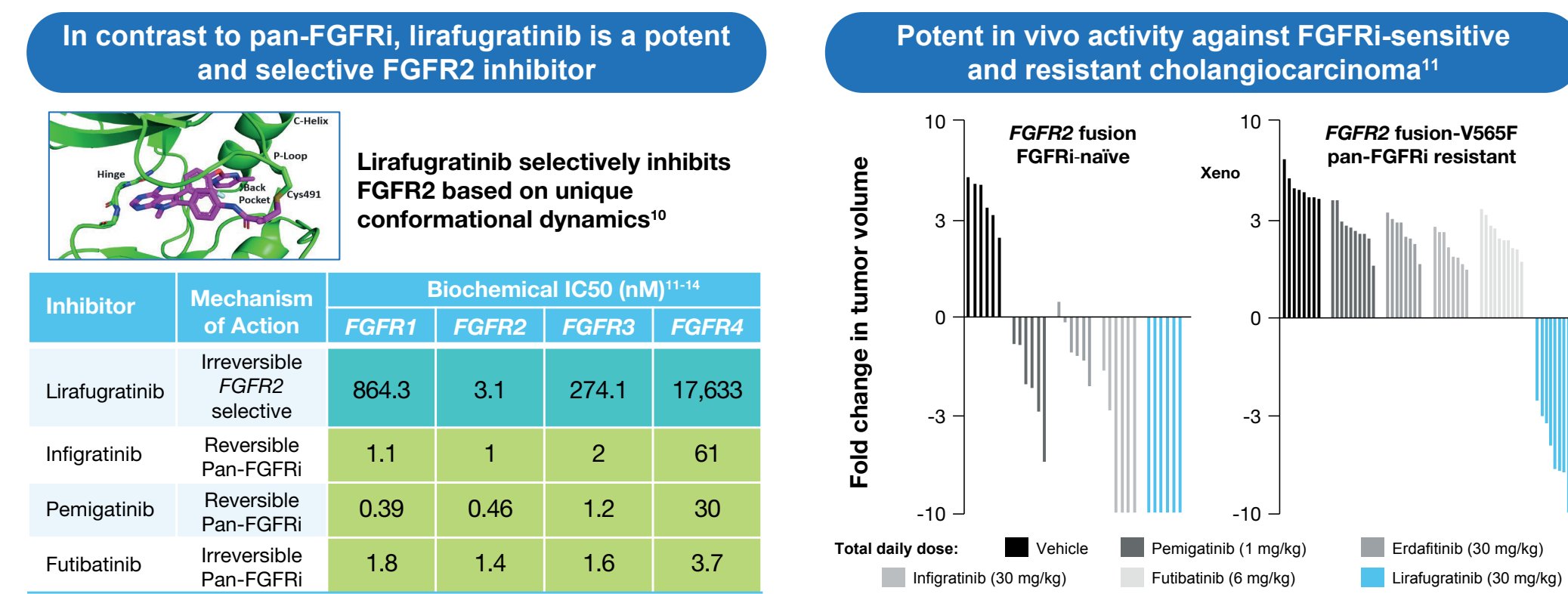
BACKGROUND

Oncogenic Activation of FGFR2 Drives Multiple Cancers, But Selective Targeting of FGFR2 Has Not Been Achieved



CCA, cholangiocarcinoma; FGFR, fibroblast growth factor receptor; FGFRi, fibroblast growth factor receptor inhibitor.

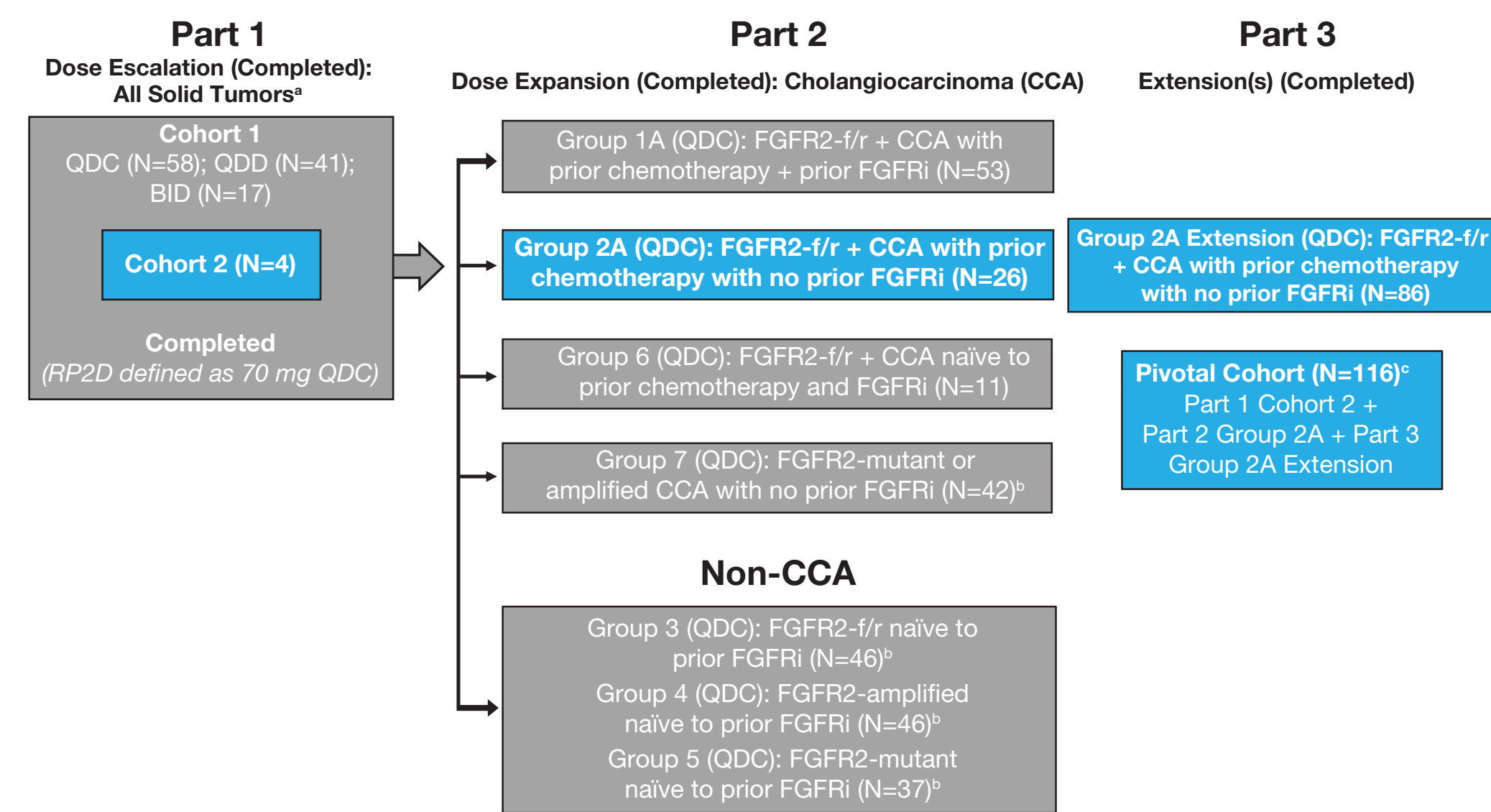
Lirafugratinib: The First Highly Selective FGFR2 Inhibitor



FGFRi, fibroblast growth factor receptor inhibitor.

METHODS

ReFocus: A Phase 1/2 Open Label Study (NCT04526106)



BID, twice daily; CCA, cholangiocarcinoma; FGFR2, fibroblast growth factor receptor 2; FGFRi, fibroblast growth factor receptor inhibitor; f/r, fusion/rearrangement; mRNA, messenger RNA; QOD, once daily on a continuous dosing schedule (referred to as QD throughout poster); QDD, once daily on a discontinuous dosing schedule; RP2D, recommended Phase 2 dose.
*Including FGFR2 genomic alteration (fusion, amplification, or mutation) or other potentially oncogenic FGFR2 alterations (eg, FGFR2 protein or mRNA overexpression and other tumor types).
*Additional 27 patients who received prior FGFRi were enrolled in Groups 3 (n=10), 4 (n=3), 5 (n=8), and 7 (n=6). These patients were not included in the efficacy analyses but were included in the safety analyses.
*As of 2/28/2024, the primary efficacy analysis of IRC-assessed data (n=114) and the secondary analysis of investigator-assessed data (n=116) set was done. The primary efficacy analysis excluded 2 patients as not evaluable.

Key Eligibility Criteria:

- 18 years or older
- Historically or cytologically confirmed diagnosis of unresectable or metastatic CCA or other solid tumors per RECIST v1.1 that were refractory to or inadequately responded to standard therapy, or for which no standard therapy exists or was declined
- ECOG PS of 0-1
- Documented FGFR2 genomic alteration (fusion, mutation, or amplification) per local assessment of blood and/or tumor tissue

Primary Endpoint:

- Confirmed ORR per RECIST v1.1 by IRC

Key Secondary Endpoints:

- Duration of response
- Disease control rate
- Progression-free survival
- Overall survival
- Safety
- Quality of life per EORTC QLQ-C30

Baseline Characteristics (Primary Efficacy Analysis Set)

Characteristics	CCA f/r FN CP (Pivotal Cohort; N=114)
Median age, years (range)	57 (29, 81)
Sex, n (%)	
Male	44 (38.6)
Female	70 (61.4)
Race, n (%)	
American Indian or Alaskan Native	0
Asian	26 (22.8)
Black or African American	2 (1.8)
Native Hawaiian or Other Pacific Islander	0
White	62 (54.4)
Other/Multiple	1 (0.9)
Not Reported/Unknown*	23 (20.2)

Geographic Region, n (%)	
North America	47 (41.2)
Europe	40 (35.1)
Asia-Pacific	27 (23.7)

Baseline ECOG PS, n (%)	
0	57 (50.0)
1	57 (50.0)

Median prior lines of systemic therapy, n (range)	
1 (1-5)	1
Lines of prior systemic therapy, n (%)	
1	72 (63.2)
2	31 (27.2)
3	5 (4.4)
4	4 (3.5)
5	2 (1.8)

Prior systemic therapy, n (%)	
Chemotherapy	114 (100)
Gem Platinum Based Without ICI	66 (57.9)
Gem Platinum Based With ICI	38 (33.3)
Fluoropyrimidine Based	37 (32.5)
Other	5 (4.4)
ICI	42 (36.8)
Without Gem Platinum	4 (3.5)

CCA, cholangiocarcinoma; CP, chemotherapy pretreated; ECOG PS, Eastern Cooperative Oncology Group performance status; f/r, fusion/rearrangement; FN, fibroblast growth factor receptor inhibitor treatment naïve; Gem, gemtacinib; ICI, immune checkpoint inhibitor.
*Not reported/unknown includes: patients who did not disclose or were unsure of their race or ethnicity.

Summary of Efficacy by IRC (Primary Efficacy Analysis Set)

	CCA f/r FN CP (Pivotal Cohort; N=114)
Confirmed BOR, n (%)	
Complete response	3 (2.6)
Partial response	50 (43.9)
Stable disease	57 (50.0)
Progressive disease	3 (2.6)
Not evaluable*	1 (0.9)
ORR [†] , n (%) [95% CI]	53 (46.5) [37.1, 56.1]
DCR [‡] , n (%) [95% CI]	110 (96.5) [91.3, 99.0]
Median DOR, months [95% CI]	11.8 [7.5, 13.0]
Median PFS, months [95% CI]	11.3 [9.2, 14.8]
Median OS [§] , months [95% CI]	22.8 [18.1, 27.2]

BOR, best overall response; CCA, cholangiocarcinoma; CP, chemotherapy pretreated; DCR, disease control rate; DOR, duration of response; FN, fibroblast growth factor receptor inhibitor treatment naïve; f/r, fusion/rearrangement; IRC, independent review committee; ORR, objective response rate; OS, overall survival; PFS, progression-free survival; RECIST v1.1, Response Evaluation Criteria in Solid Tumors version 1.1.
*Note: Percentages are based on the number of patients in the primary efficacy analysis set for the CCA f/r FN CP population. Note: 95% CI is based on the exact Clopper-Pearson method.
†No valid post-baseline assessment. *ORR is defined as the proportion of patients achieving a confirmed response of complete response or partial response per RECIST v1.1.
‡DCR is defined as the proportion of patients with a confirmed response of complete response, partial response, or stable disease per RECIST v1.1. *Safety analysis set (N=116) is used for the overall survival analysis because the safety analysis set is equal to the full analysis set, which includes all enrolled patients who had received at least 1 dose of study drug.

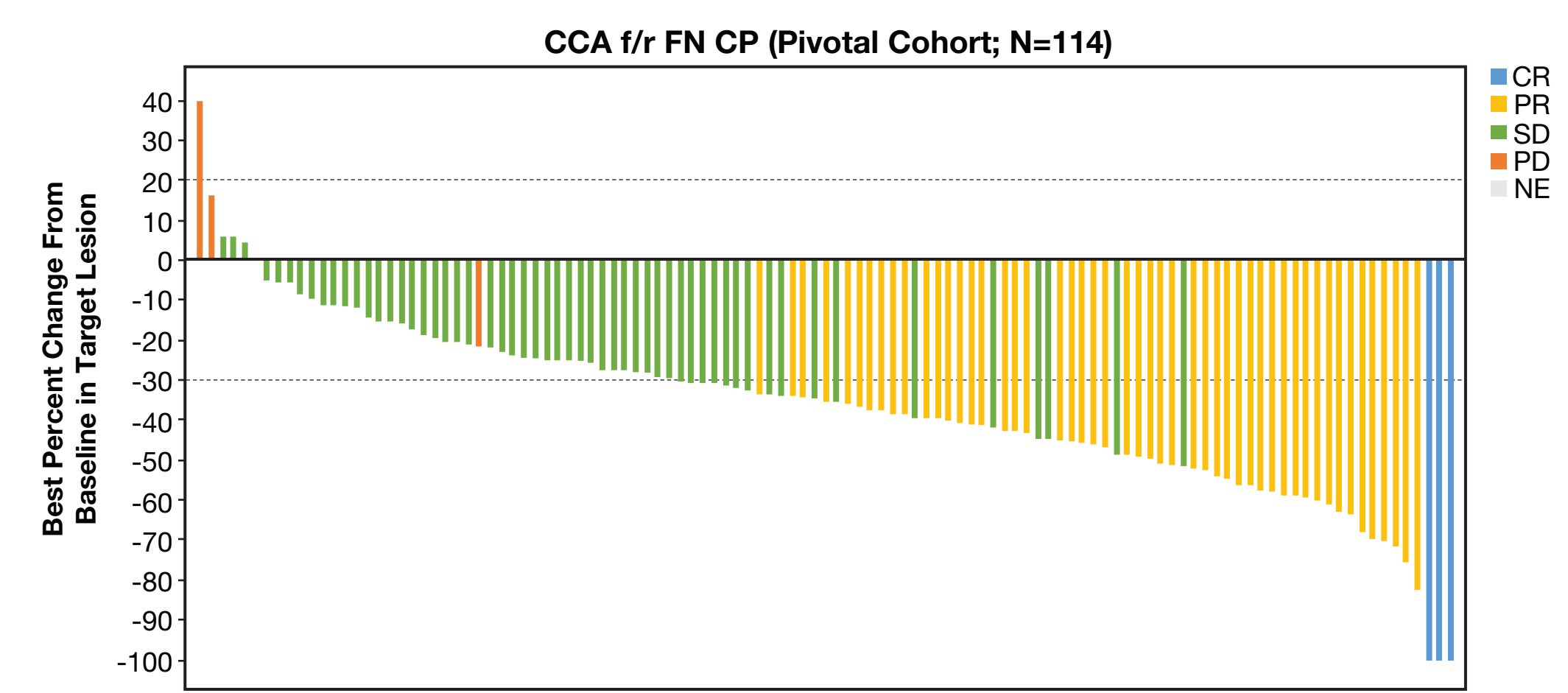
Summary of Efficacy by IRC (Supportive Efficacy Populations in Primary Efficacy Analysis Set)

	CCA f/r FP CP (Group 1A; N=53)	CCA f/r FN CN (Group 6; N=11)
Confirmed BOR, n (%)		
Complete response	0	1 (9.1)
Partial response	12 (22.6)	6 (54.5)
Stable disease	29 (54.7)	4 (36.4)
Progressive disease	10 (18.9)	0
Not evaluable*	2 (3.8)	0
ORR [†] , n (%) [95% CI]	12 (22.6) [12.3, 36.2]	7 (63.6) [30.8, 89.1]
DCR [‡] , n (%) [95% CI]	41 (77.4) [63.8, 87.7]	11 (100) [71.5, 100]
Median DOR, months [95% CI]	5.6 [3.8, NE]	9.2 [5.5, NE]
Median PFS, months [95% CI]	5.6 [3.7, 7.4]	11.0 [3.7, NE]
Median OS [§] , months [95% CI]	10.9 [6.6, 18.2]	NE [12.6, NE]

BOR, best overall response; CCA, cholangiocarcinoma; CN, chemotherapy naïve; CP, chemotherapy pretreated; DCR, disease control rate; DOR, duration of response; FN, fibroblast growth factor receptor inhibitor treatment naïve; FP, fibroblast growth factor receptor inhibitor pretreated; f/r, fusion/rearrangement; IRC, independent review committee; NE, not evaluable; ORR, objective response rate; OS, overall survival; PFS, progression-free survival; RECIST v1.1, Response Evaluation Criteria in Solid Tumors version 1.1.
*Note: Percentages are based on the number of patients in the primary efficacy analysis set for the CCA f/r FN CP population. Note: 95% CI is based on the exact Clopper-Pearson method.
†No valid post-baseline assessment. *ORR is defined as the proportion of patients achieving a confirmed response of complete response or partial response per RECIST v1.1.
‡DCR is defined as the proportion of patients with a confirmed response of complete response, partial response, or stable disease per RECIST v1.1. *Safety analysis set (N=116) is used for the overall survival analysis because the safety analysis set is equal to the full analysis set, which includes all enrolled patients who had received at least 1 dose of study drug.

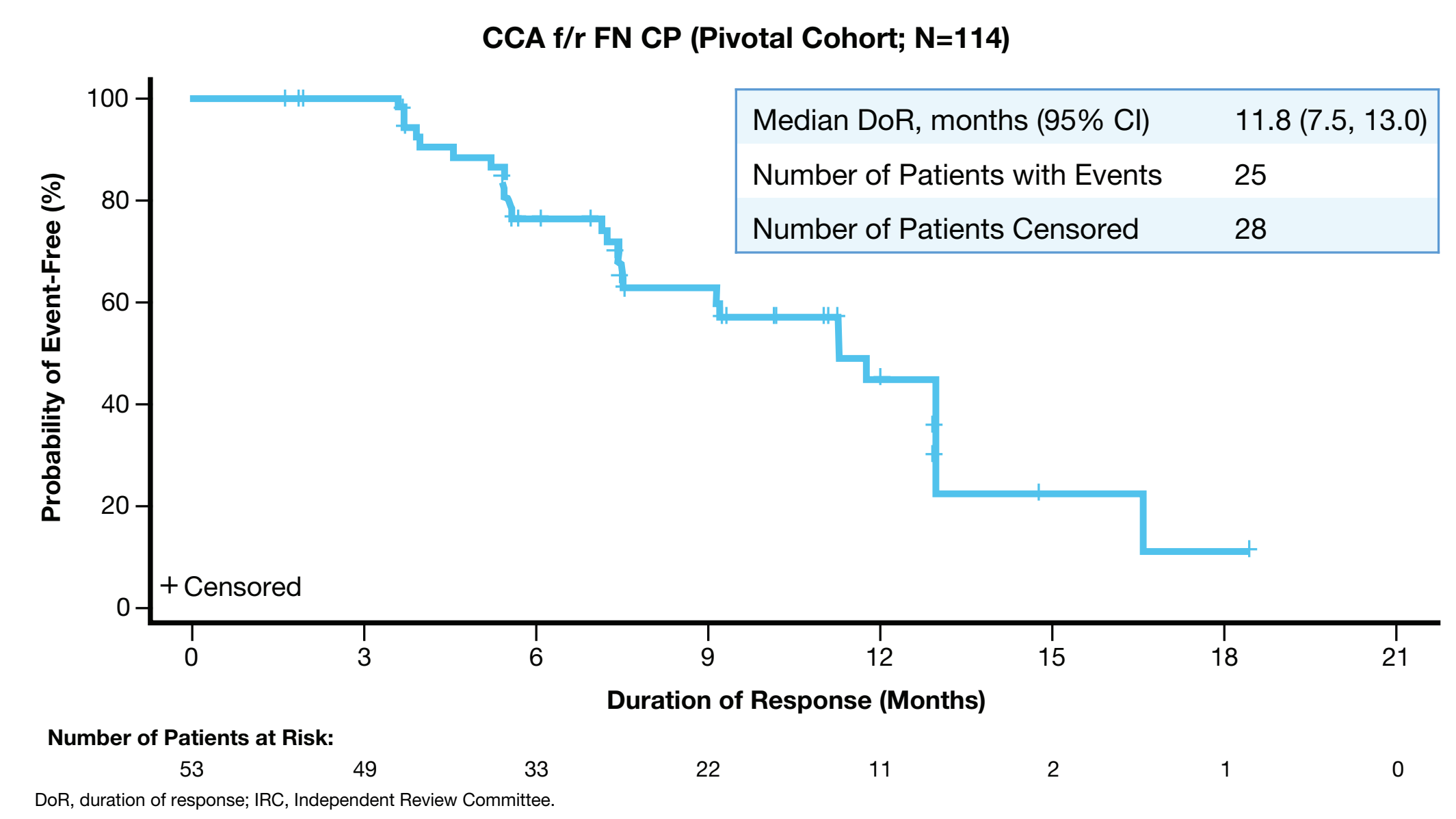
RESULTS

Waterfall Plot for BOR From Baseline by IRC (Primary Efficacy Analysis Set)



BOR, best overall response; CCA, cholangiocarcinoma; CP, chemotherapy pretreated; CR, complete response; FN, fibroblast growth factor receptor inhibitor treatment naïve; f/r, fusion/rearrangement; IRC, independent review committee; NE, not evaluable; PD, progressive disease; QD, once daily dosing schedule; TEAE, treatment-emergent adverse event.

Duration of Response by IRC (Primary Efficacy Analysis Set)



Duration of Treatment (Pivotal Efficacy Population and Supportive Efficacy Populations in Primary Efficacy Analysis Set)

	CCA f/r FN CP (Pivotal Cohort; N=114)	CCA f/r FP CP (Group 1A; N=53)	CCA f/r FN CN (Group 6; N=11)
Median duration of treatment, weeks (range) [†]	41 (4, 138)	27 (2, 96)	36 (16, 55)

CCA, cholangiocarcinoma; CN, chemotherapy naïve; CP, chemotherapy pretreated; FN, fibroblast growth factor receptor inhibitor treatment naïve; FP, fibroblast growth factor receptor inhibitor pretreated; f/r, fusion/rearrangement.
†Duration of treatment (weeks) = last dose date - first dose date - 1/7.

Summary of TRAEs (Safety Analysis Set)

	All Solid Tumors (70 mg QD Safety Population; N=385)	CCA f/r FN CP (Pivotal Safety Population; N=116)
Any TRAE, n (%)	379 (98.4)	116 (100)
Any CTCAE Grade ≥3 TRAE, n (%)	167 (43.4)	67 (57.8)
Any TRAE Leading to Study Drug Dose Reduction, n (%)	213 (55.3)	88 (75.9)
Any TRAE Leading to Study Drug Interruption, n (%)	262 (68.1)	96 (82.8)
Any TRAE Leading to Study Treatment Discontinuation, n (%)	10 (2.6)	5 (4.3)
Any TRAE Leading to Death, n (%)	0	0

CCA, cholangiocarcinoma; CP, chemotherapy pretreated; CTCAE, Common Terminology Criteria for Adverse Events; FN, fibroblast growth factor receptor inhibitor treatment naïve; f/r, fusion/rearrangement; QD, once daily on a continuous dosing schedule; TRAE, treatment-related adverse event.

Summary of On-Target TEAEs (Safety Analysis Set)

	All Solid Tumors (70 mg QD Safety Population; N=385)	CCA f/r FN CP (Pivotal Safety Population; N=116)
Stomatitis, n (%)	263 (68.3)	47 (40.5)
Palmar-plantar erythrodysesthesia syndrome, n (%)	255 (66.2)	77 (66.4)
Nail toxicities [§] , n (%)	282 (73.2)	31 (26.7)
Retinal pigment epithelial detachment [†] , n (%)	113 (29.4)	7 (6.0)

CCA, cholangiocarcinoma; CP, chemotherapy pretreated; FN, fibroblast growth factor receptor inhibitor treatment naïve; f/r, fusion/rearrangement; QD, once daily on a continuous dosing schedule; RPED, retinal pigment epithelial detachment; TEAE, treatment-emergent adverse event.
*Includes preferred terms of lip ulceration, mouth ulceration, and stomatitis. †Nail toxicities is an umbrella term and included preferred terms of nail atrophy, nail dystrophy, nail bed inflammation, nail bed disorder, nail bed inflammation, nail bed tenderness, nail brittle fissure, nail discoloration, nail discomfort, nail disorder, nail dystrophy, nail fold inflammation, nail growth abnormal, nail hypertrophy, nail injury, nail pigmentation, nail pitting, nail ridging, nail toxicity, onycholysis, onychomycosis, onychophagy, onycholysis, onychomadesis, onychomalacia, and paronychia. ‡RPED is an umbrella term and included preferred terms of acquired pigmented retinopathy, central serous chorioretinopathy, choroidal retinal detachment, choroidoretinitis, choroidoretinopathy, cystoid macular edema, detachment of macular retinal pigment epithelium, detachment of retinal pigment epithelium, exudative retinopathy, macular detachment, outer retinal tubulation, maculopathy, retinal detachment, retinal disorder, retinal pigment epithelial tear, retinal pigment epitheliopathy, retinal scar, retinal tear, retinal thickening, retinal toxicity, retinal vascular occlusion, retinal vein occlusion, retinopathy, serous retinal detachment, serous retinopathy, and subretinal fluid. §RPED was monitored by optical coherence tomography.

Summary of Most Common TRAEs Leading to Dose Interruption and Study Discontinuation (Safety Analysis Set)

	All Solid Tumors (70 mg QD Safety Population; N=385)	CCA f/r FN CP (Pivotal Safety Population; N=116)
TRAEs Leading to Dose Interruption (>10%), n (%)		
Stomatitis	80 (20.8)	25 (21.6)
Palmar-plantar erythrodysesthesia syndrome	138 (35.8)	63 (54.3)
TRAEs Leading to Study Discontinuation, n (%)		
Stomatitis	3 (0.8)	1 (0.9)
Anaphylactic reaction	1 (0.3)	1 (0.9)
Drug hypersensitivity	1 (0.3)	0
Palmar-plantar erythrodysesthesia syndrome	4 (1.0)	3 (2.6)
Nail disorder	1 (0.3)	0

CCA, cholangiocarcinoma; CP, chemotherapy pretreated; FN, fibroblast growth factor receptor inhibitor treatment naïve; f/r, fusion/rearrangement; QD, once daily dosing schedule; TRAE, treatment-related adverse event.

Summary of Off-Isoform Toxicity TEAEs (Safety Analysis Set)

	All Solid Tumors (70 mg QD Safety Population; N=385)	CCA f/r FN CP (Pivotal Safety Population; N=116)
Hyperphosphatemia [†] , n (%)	79 (20.5)	0
Diarrhea, n (%)	72 (18.7)	3 (2.6)

CCA, cholangiocarcinoma; CP, chemotherapy pretreated; FGFRi, fibroblast growth factor receptor inhibitor; FN, FGFRi treatment naïve; f/r, fusion/rearrangement; QD, once daily on a continuous dosing schedule; TEAE, treatment-emergent adverse event.
†Hyperphosphatemia did not require dose reductions or discontinuations; 1 patient (0.3%) experienced a dose interruption, and no phosphate binder interventions were needed.

CONCLUSIONS

- Lirafugratinib at the proposed dosage regimen of 70 mg QD demonstrated positive antitumor activity in patients with previously treated, unresectable, locally advanced or metastatic CCA harboring FGFR2-f/r.
- ORR assessed by IRC was 46.5% (95% CI: 37.1, 56.1) with a median DOR of 11.8 months (95% CI: 7.5, 13.0).
- The safety profile of lirafugratinib is consistent with FGFR2 inhibition and is predictable and manageable.
- The most common adverse events (eg, stomatitis and palmar-plantar erythrodysesthesia syndrome) are on-target and reversible.
- Overall, lirafugratinib is a valuable therapeutic option for patients with FGFR2 fusion/rearrangement CCA who have progressed on standard therapies.

REFERENCES

1. Babina IS and Turner NG. *Nat Rev Cancer*. 2017;17:318-332; 2. Krook MA, et al. *Br J Cancer*. 2021;124:880-892; 3. Helsten T, et al. *Clin Cancer Res*. 2016;22:259-267; 4. Li J, et al. *Front Oncol*. 2021; 11: DOI=10.3389/fonc.2021.644854 5. PEMAZYRE[®] (pemigatinib). Highlights of prescribing information; Pemazyre (pemigatinib) [package insert]. Wilmington, DE Incyte; 2020; 6. LYTGObi[®] (futibatinib). Highlights of prescribing information; Lytgoi (futibatinib) [package insert]. Princeton, NJ Taiho Oncology; 2022 7. BALVERSA (erdafitinib) Highlights of prescribing information; Balversa (erdafitinib) [package insert]. Horsham, PA Janssen. 8. Truseltiq (infigratinib) [package insert]. Brisbane, CA QED Therapeutics; 2021 9. As defined by increased serum phosphate except for infigratinib which is not specified. 10. Schönher H, et al. Presented at MedChem GRC meeting, August 7-12, 2022. 11. Goyal L, et al. Presented at AACR Annual Meeting, April 9-14, 2021. 12. Truseltiq (infigratinib) [package insert]. Brisbane, CA QED Therapeutics; 2021. 13. Pemazyre (pemigatinib) [NDA]. Wilmington, DE; 2019. www.accessdata.fda.gov/drugsatfda_docs/nda/2020/213736Orig1s000ChemR.pdf Accessed August 25, 2022. 14. Sootome H, et al. *Cancer Res*. 2020;80(22):4986-4997.

ACKNOWLEDGMENTS

We would like to thank the patients and their families and caregivers, all study investigators, sub-investigators, and research staff.

Study Sites:

Australia	South Korea
France	Spain
Germany	Sweden
Hong Kong	Taiwan
Italy	United Kingdom
Netherlands	United States
Singapore	

